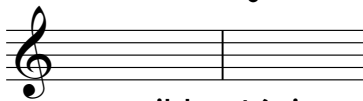


Sensible

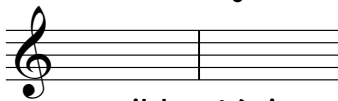
1. Escribe la sensible y la tónica de las siguientes tonalidades.

Sol Mayor



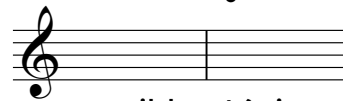
sensible - tónica

Fa Mayor



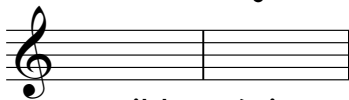
sensible - tónica

Mi Mayor



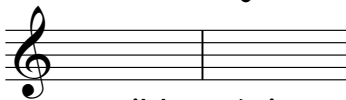
sensible - tónica

La b Mayor



sensible - tónica

Si b Mayor



sensible - tónica

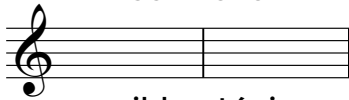
Re Mayor



sensible - tónica

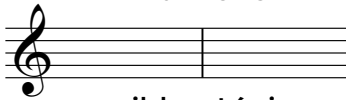
2. Escribe la sensible de las siguientes tonalidades.

Sol Menor



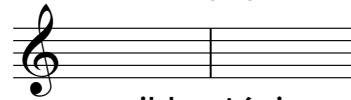
sensible - tónica

Fa Menor



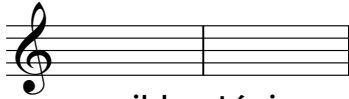
sensible - tónica

Mi Menor



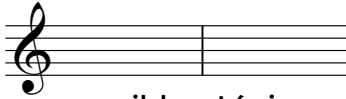
sensible - tónica

La b Menor



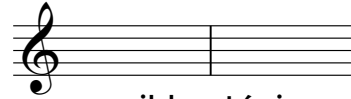
sensible - tónica

Si b Menor



sensible - tónica

Re Menor



sensible - tónica

3. Compara los resultados de los ejercicios 1 y 2 y di qué observas.

4. En esta melodía aparece la sensible varias veces. Rodea cada nota sensible.

